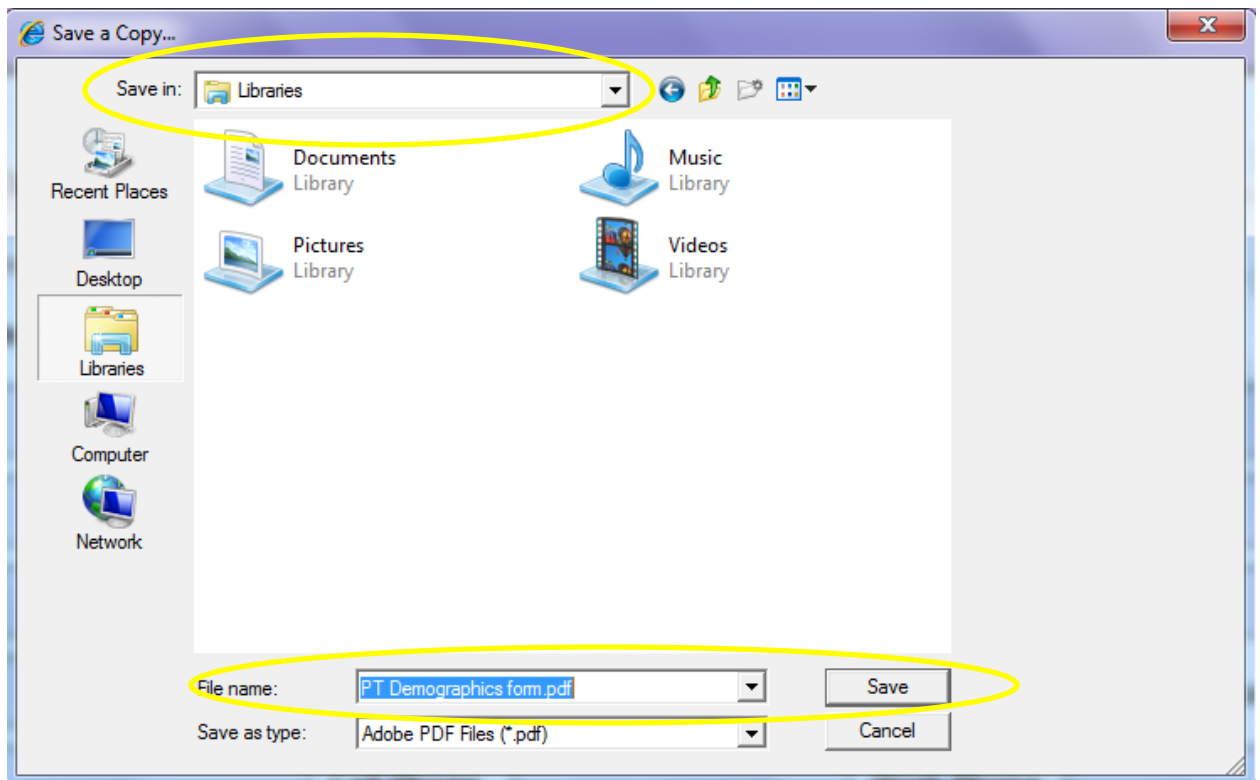
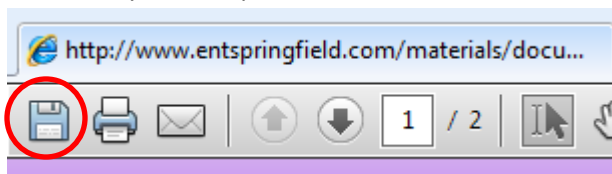


## New Patient Form Instructions

Once you choose a form from our website, it will open up with Adobe Reader in your browser window. These are interactive forms that can be filled out online. Filling these forms out online prior to your visit will save you time on the day of your appointment, and will allow us to serve you faster. Just click in the boxes next to each field and start typing. Once you have finished filling in all of the fields, follow these steps:

- Click on the diskette icon on the top left to “Save a Copy”, and save the file to a location of your choice on your computer



- Attach the file you just saved to a new email message addressed to [administrator@entspringfield.com](mailto:administrator@entspringfield.com).
- You can also print out the form after you have filled it out, and bring it with you to your appointment.